

## REPRESENTATIVE PROJECTS

### CLIENT

Vigen Associates

### OWNER

County of Madera

### CONTACT

Larry Colucci  
Deputy Road Commissioner  
County of Madera  
201 West Almond Avenue  
Madera, CA 93637  
(559) 675-7811

### PROJECT DATES

August 1999 – May 2000

### CONSULTANT COST

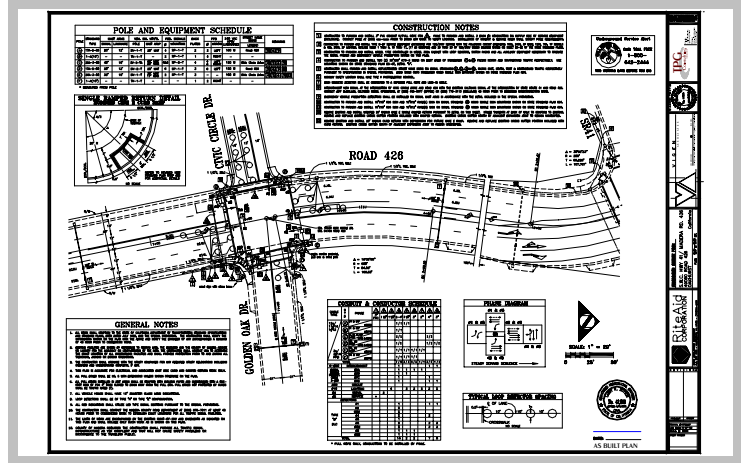
\$ 8,200

### FIRM INVOLVEMENT

Sub Consultant

### PROJECT STATUS

Completed



## ROAD IMPROVEMENT, TRAFFIC SIGNAL, SIGNAL INTERCONNECT AND STRIPING, SIGNING & PAVEMENT MARKING DESIGN

### OAKHURST, CA

Development of a Rite-Aid at the northwest corner of the intersection of Road 426 and Civic Center Drive in Oakhurst dictated the demand for a new access road and traffic signal. Working closely with the developer and the County of Madera, TPG designed the signal and roadway for compliance with the County of Madera while satisfying the developer's time schedule. One of the design criteria for this project was to interconnect the new facility to the existing signal located immediate to the east. In addition to this work effort, TPG was retained by the client to perform geometric analysis of the overall roadway alignment associated with the larger road construction project. This work was extra services and is not included in the above stated proposal amounts and consultant costs.