

REPRESENTATIVE PROJECTS

CLIENT / OWNER

City of Santa Maria

CONTACT

Mr. Bill Shipsey, Planner III
Community Development
Department
City of Santa Maria
110 S. Pine Street #101
Santa Maria, CA 93458-5082
805-925-0951

PROJECT DATES

February 2002 – 2004

CONSULTANT COST

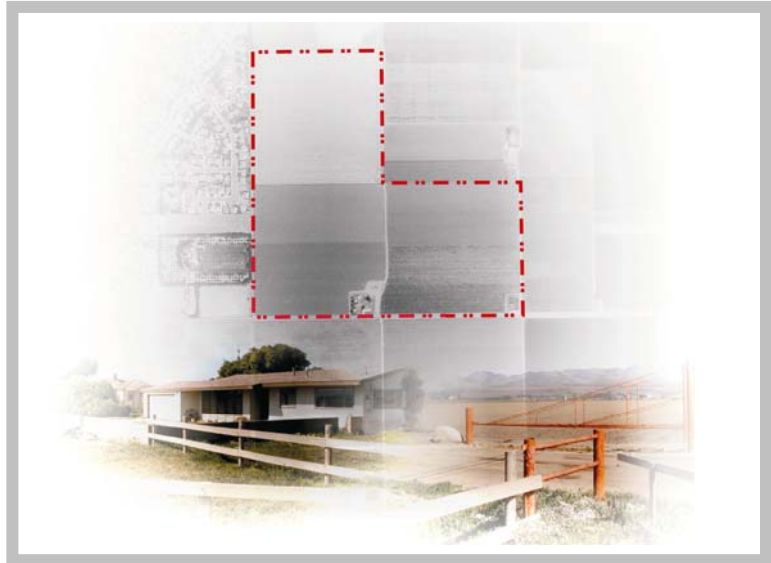
\$200,000

FIRM INVOLVEMENT

Preparation of EIR

PROJECT STATUS

Completed



SILVA ESTATES PROJECT EIR

CITY OF SANTA MARIA

This Environmental Impact Report (EIR) assesses the impacts of the proposed project, a residential development under consideration by the City of Santa Maria. The project proposes development of a 116-acre site in the City of Santa Maria into a residential subdivision. This EIR was prepared in accordance with the requirements of the California Environmental Quality Act (CEQA).

Concerns were raised regarding the increase in conversion of prime open-space agricultural land to more urban uses. In addition, impacts identified to be resolved through mitigation included air quality, biological resources, hazardous materials, hydrology and water quality, noise, housing, public services and traffic.

In addition to the preparation of the EIR, TPG Consulting, Inc. was responsible for the preparation of the Traffic Impact Study for the proposed project. It was the objective of TPG to provide the City of Santa Maria with a document which met all of the CEQA guidelines, thereby streamlining the process.